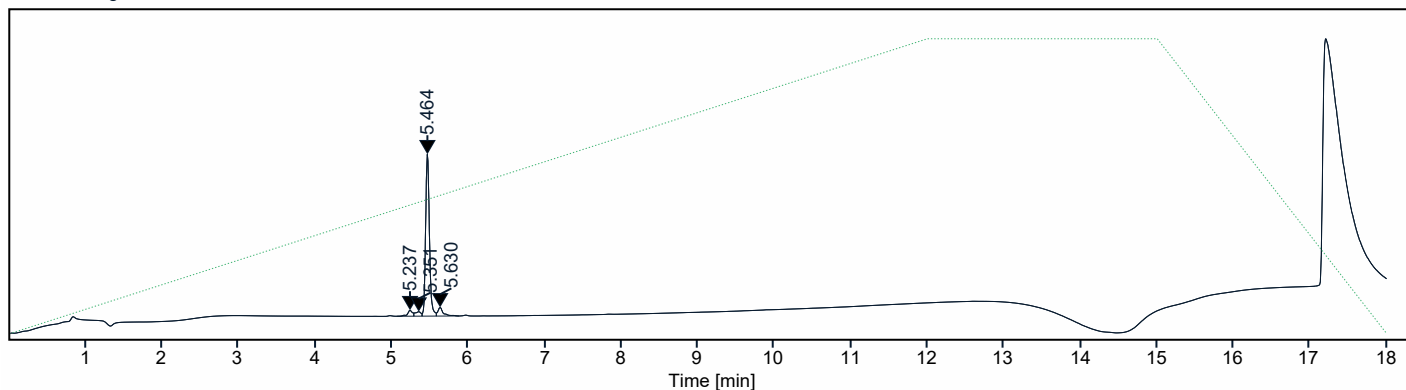




Instrument Name      LCMS01      Sample Name      LB CVT-01-06 QC

Injection Acq Method      QC 5 to 95 MeCN MW 100-800 ESI+-.amx  
Name

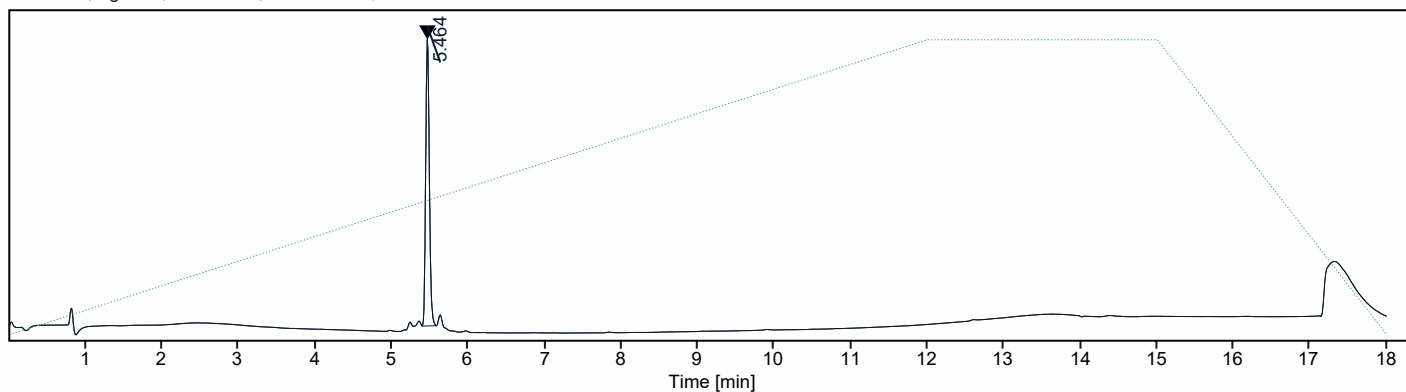
MWD1B,Sig=220,4 Ref=400,50 PMP1D,Solvent Ratio B



**Signal:** MWD1B,Sig=220,4 Ref=400,50

| RT [min] | Type | Width [min] | Area      | Height   | Area%   | Name |
|----------|------|-------------|-----------|----------|---------|------|
| 5.237    | BV   | 0.2225      | 64.8728   | 14.7080  | 3.9109  |      |
| 5.351    | VV   | 0.1082      | 58.1863   | 11.0690  | 3.5078  |      |
| 5.464    | VV   | 0.1865      | 1431.0474 | 405.3843 | 86.2707 |      |
| 5.630    | VB   | 0.2953      | 104.6818  | 21.4739  | 6.3107  |      |
|          |      | Sum         | 1658.7883 |          |         |      |

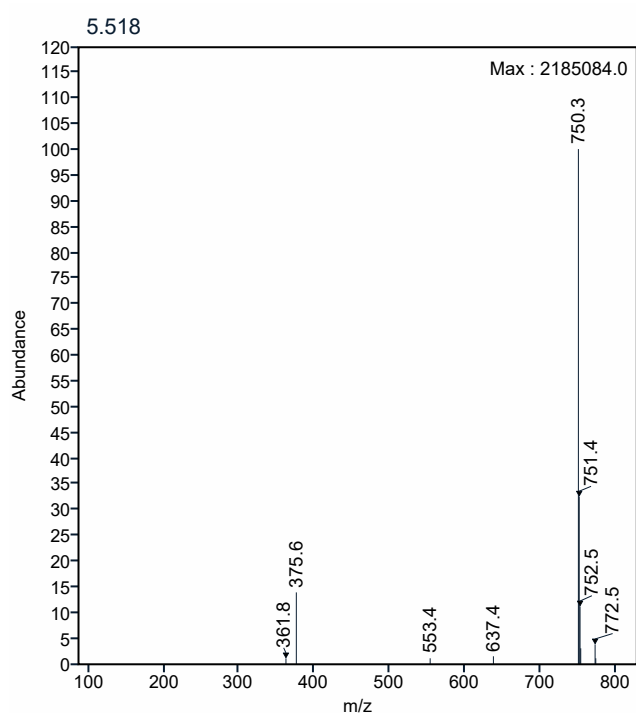
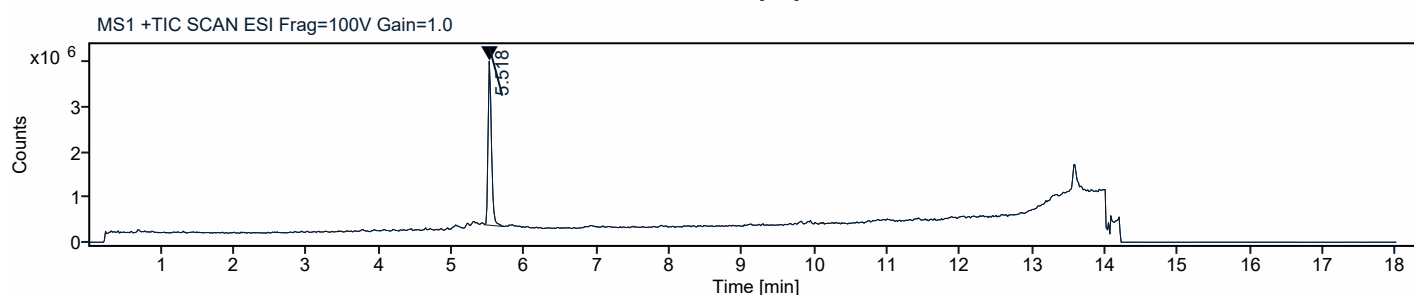
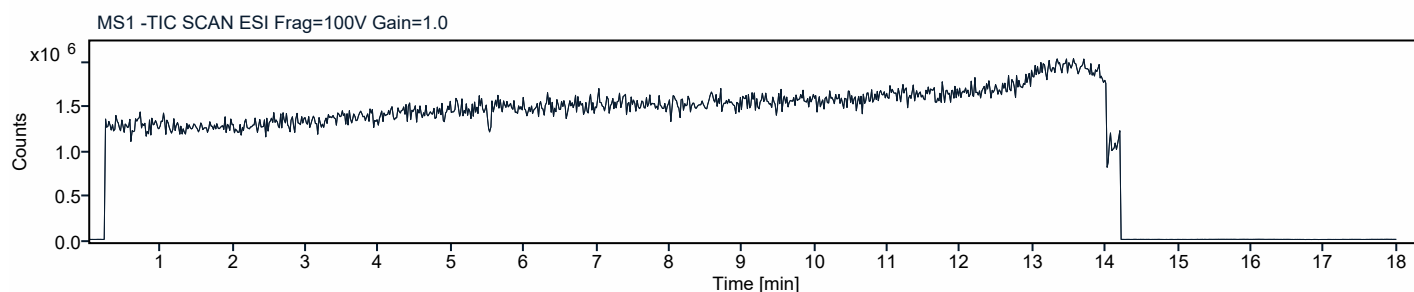
MWD1D,Sig=280,4 Ref=400,100 PMP1D,Solvent Ratio B





Signal: MWD1D,Sig=280,4 Ref=400,100

| RT [min] | Type | Width [min] | Area     | Height  | Area%    | Name |
|----------|------|-------------|----------|---------|----------|------|
| 5.464    | BB   | 0.1842      | 169.4988 | 49.9098 | 100.0000 |      |
|          |      | Sum         | 169.4988 |         |          |      |





Acquisition Method: QC 5 to 95 MeCN MW 100-800 ESI+-.amx  
Path: D:\CDSPProjects\CURVETX\Results\01-HIF\LB CVT-01-06 QC.sirslt

## Quat. Pump Method

Flow: 0.500 mL/min  
Use Solvent Types: Yes  
Low Pressure Limit: 0.00 bar  
High Pressure Limit: 600.00 bar  
Max. Flow Ramp Up: 100.000 mL/min<sup>2</sup>  
Primary Channel: Automatic  
Max. Flow Ramp Down: 100.000 mL/min<sup>2</sup>  
Module Display Name: Quat. Pump  
Module Type: G7104C  
Order: 1

### Solvent Composition

| Channel | Ch. 1 Solv. | Name 1            | Used | Percent (%) |
|---------|-------------|-------------------|------|-------------|
| A       | 100.0 %     | Water V.03        | Yes  | 95.00       |
| B       | 100.0 %     | Acetonitrile V.03 | Yes  | 5.00        |
| C       |             |                   | No   |             |
| D       |             |                   | No   |             |

### Timetable

| Time (min) | A (%) | B (%)  | C (%) | D (%) | Flow (mL/min) | Pressure (bar) |
|------------|-------|--------|-------|-------|---------------|----------------|
| 12.00      | 0.00  | 100.00 | 0.00  | 0.00  | ---           | ---            |
| 15.00      | 0.00  | 100.00 | 0.00  | 0.00  | ---           | ---            |
| 18.00      | 95.00 | 5.00   | 0.00  | 0.00  | ---           | ---            |

## Stoptime

Stoptime Mode: Time set  
Stoptime: 18.00 min